

# FDS-32

Solar DC Fuse

YUEQING FEEO  
ELECTRIC CO.,LTD

## ► Application

A range of 10x38mm fuse links specifically designed for protecting photovoltaic strings. These fuse links are capable of interrupting low overcurrents associated with faulted photovoltaic string arrays (reverse current, multi-array fault).

## ► Structural Characteristics

- According to IEC60269-1
- Rated current: 1-32A
- Rated voltage: DC 1000V
- Rated breaking capacity: DC 20KA
- Operating class gPV for Solar protection



## ► Specifications

Pole	1P
Rated Voltage Ue (V DC)	1000
Rated Current In (A)	1,2,3,4,5,6,8,10,12,15,20,25,32
Biggest Block Ability(KA)	20
The Most High Power Consumption(W)	3.5

## ► Connection and Installation

Connection(mm <sup>2</sup> )	2.5 - 10
Working Temperature(°C)	-30~+70
Resistance And Damp Hot	Class 2
Altitude(m)	≤ 2000
Relative Humidity	≤ 95%
Protection Class/Degree	IP20
Pollution	3
Installation Environment	No obvious shock and vibration
Installation Class/Type	Class III/DIN rail

## ► Size(mm)

WxHxL	Size/Dimension(mm)	
	W	18
	H	60
	L	78
Fuse Size		10x38
Fuse Link Weight(kg)		0.011
Fuse holder weight(kg)		0.07

## ► Application conditions

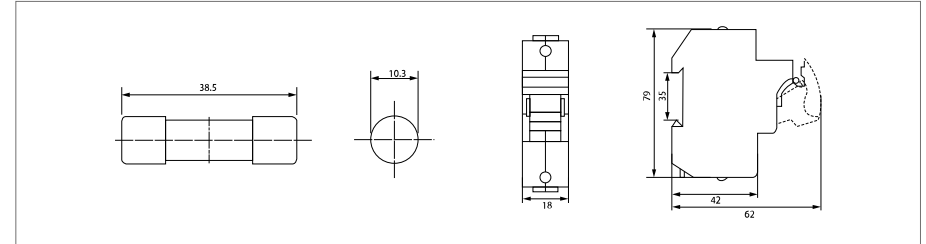
- Photovoltaic system fuse accord with UL248-1 standard.
- Photovoltaic battery dc fuse designed to used for photovoltaic (PV) system.
- Main effect is to protect the solar panels. Solar panels points in effective condition is broken.
- Fault light cells break points at the same time, does not affect other normal work of light from the stack.
- Technical Data Rated voltage: DC1000V Breaking capacity: 25KA Function level: PV.

# FDS-32

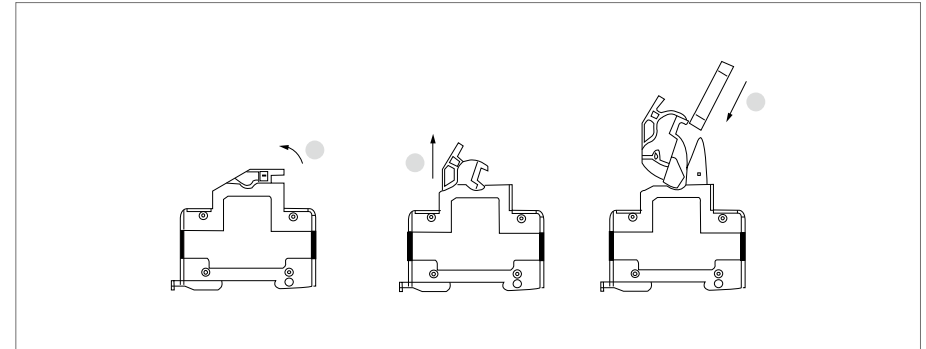
Solar DC Fuse

FEEO

## ► Dimensions



## ► Installation



## ► Characteristic Curve

